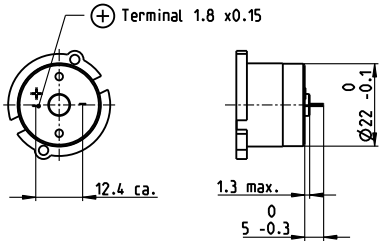


# DC Tacho DCT 22 0.52 Volt



## Important Information

- Tacho with moving coil, maxon system.
- Tacho with precious metal commutation.
- To establish total inertia add motor and tacho inertias.
- With the output shaft turning CW as seen from the mounting surface, the tacho output voltage will be positive at the + terminal.
- A high impedance load is recommended at tacho terminals.
- The tacho current should be kept low.
- The indicated resonance frequency refers to the motor-tacho rotor system.

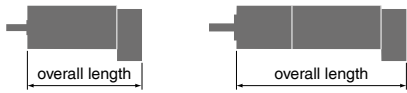
sensor

- Stock program
- Standard program
- Special program (on request)

## Part Numbers

118909	118910
--------	--------

Type	118909	118910
Shaft diameter (mm)	3	4



## maxon Modular System

+ Motor	Page	+ Gearhead	Page	Overall length [mm] / • see Gearhead
RE 25	144/146			76.8
RE 25	144/146	GP 26, 0.75 - 4.5 Nm	390	•
RE 25	144/146	GP 32, 0.75 - 4.5 Nm	392/393	•
RE 25	144/146	GP 32, 1.0 - 6.0 Nm	396	•
RE 25	144/146	KD 32, 1.0 - 4.5 Nm	403	•
RE 25	144/146	GP 32 S	426-433	•
RE 25, 20 W	145			65.3
RE 25, 20 W	145	GP 22, 0.5 - 1.0 Nm	383	•
RE 25, 20 W	145	GP 26, 0.75 - 4.5 Nm	390	•
RE 25, 20 W	145	GP 32, 0.75 - 4.5 Nm	392/393	•
RE 25, 20 W	145	GP 32, 0.75 - 6.0 Nm	396	•
RE 25, 20 W	145	KD 32, 1.0 - 4.5 Nm	403	•
RE 25, 20 W	145	GP 32 S	426-433	•
RE 35, 90 W	149			89.1
RE 35, 90 W	149	GP 32, 0.75 - 6.0 Nm	392-399	•
RE 35, 90 W	149	GP 32, 4.0 - 8.0 Nm	400	•
RE 35, 90 W	149	GP 42, 3.0 - 15 Nm	405	•
RE 35, 90 W	149	GP 32 S	426-433	•

## Technical Data

Output voltage per 1000 rpm	0.52 V	Max. current	10 mA
Terminal resistance tacho	37.7 Ω	Tolerance of the output voltage	± 15%
Typical peak to peak ripple	≤ 6%	Rotor inertia (tacho only)	< 3 gcm <sup>2</sup>
Ripple frequency per turn	14	Resonance frequency with motors on p. 144 - 146	> 2 kHz
Linear voltage tolerance, 500 to 5000 rpm	± 0.2%	with motors on p. 149	> 4.5 kHz
Linear voltage tolerance with 10 kΩ load resistance	± 0.7%	Temperature range	-20 ... +65 °C
Polarity error	± 0.1%		
Temperature coefficient of EMF (magnet)	-0.02% /°C	Option: Pigtailed in place of solder terminals.	
Temperature coefficient of coil resistance	+0.4% /°C		

## Connection example

