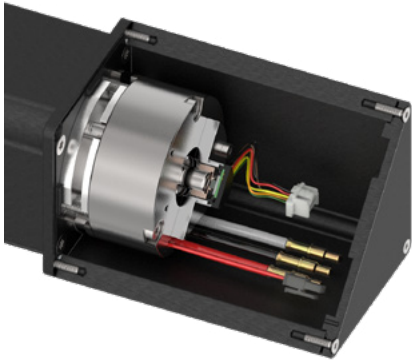


Brake AB 60 S 24 VDC, 5.0 Nm



- Stock program
- Standard program
- Special program (on request)

Important Information

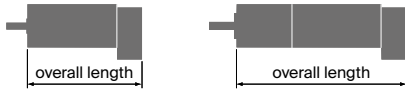
- Spring-loaded brake - single-disc brake with two friction surfaces for direct current. Braked in unpowered condition (dry operation).
- Holding brake, prevents rotation of the shaft at standstill or with turned off motor power.
- Not suitable for dynamic braking.
- Not backlash-free ($\pm 1^\circ$ max.).

accessories

Part Numbers

x drives

Type



maxon Modular System

| + Drive | Page | + Gearhead | Page | + Sensor | Page | Overall length [mm] / * see Gearhead |
|----------|------|------------|---------|----------|------|--------------------------------------|
| IDX 70 S | 360 | | | | | online |
| IDX 70 S | 360 | GPX 70 | 406/407 | | | online |
| IDX 70 M | 361 | | | | | online |
| IDX 70 M | 361 | GPX 70 | 406/407 | | | online |
| IDX 70 L | 362 | | | | | online |

| + Motor | Page | + Gearhead | Page | + Sensor | Page | Overall length [mm] / * see Gearhead |
|----------|------|------------|---------|----------|------|--------------------------------------|
| IDX 70 S | 248 | | | | | online |
| IDX 70 S | 248 | GPX 70 | 406/407 | | | online |
| IDX 70 M | 249 | | | | | online |
| IDX 70 M | 249 | GPX 70 | 406/407 | | | online |
| IDX 70 L | 250 | | | | | online |

| Technical Data | | | | | Pin Allocation |
|--|---------------------|---------------------------|------------------------------------|---------|----------------|
| Max. permissible static torque at 20°C | 5 Nm | Nominal voltage, smoothed | 24 VDC -10...+5% | | online |
| Mass inertia | 25 gcm ² | Resistance | R ₂₀ = 41.16 Ω 0...+10% | | |
| Max. speed | 8800 rpm | Duty cycle | 100% | | |
| Weight | 480 g | Reaction time | - Coupling | ≤ 75 ms | |
| Ambient temperature range | -40...+120°C | | - Opening | ≤ 75 ms | |