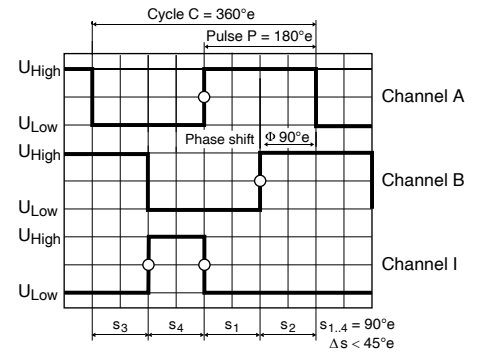
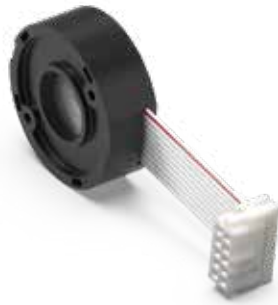


Encoder MR Type L, 256-1024 CPT, 3 channels, with line driver



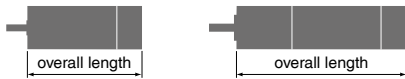
Direction of rotation cw (definition cw p. 78)

sensor

- Stock program
- Standard program
- Special program (on request)

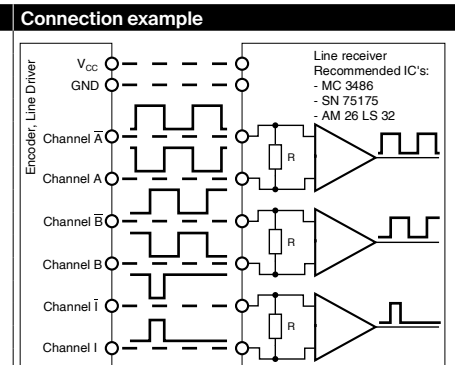
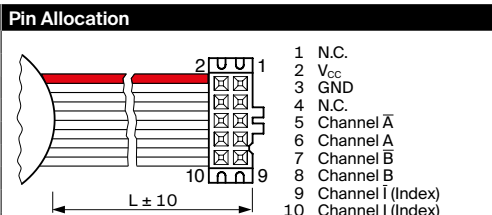
Part Numbers				
225783	228452	225785	228456	225787

Type					
Counts per turn	256	500	512	1000	1024
Number of channels	3	3	3	3	3
Max. operating frequency (kHz)	80	200	160	200	320
Max. speed (rpm)	18750	24000	18750	12000	18750



maxon Modular System									
+ Motor	Page	+ Gearhead	Page	∅ Enc [mm]	Overall length [mm] / • see Gearhead				
RE 30, 15 W	147			32	79.4	79.4	79.4	79.4	79.4
RE 30, 15 W	147	GP 32, 0.75 - 4.5 Nm	394	32	•	•	•	•	•
RE 30, 60 W	148			32	79.4	79.4	79.4	79.4	79.4
RE 30, 60 W	148	GP 32, 0.75 - 4.5 Nm	392	32	•	•	•	•	•
RE 30, 60 W	148	GP 32, 0.75 - 6.0 Nm	394-399	32	•	•	•	•	•
RE 30, 60 W	148	GP 32 S	426-433	32	•	•	•	•	•
RE 35, 90 W	149			32	82.4	82.4	82.4	82.4	82.4
RE 35, 90 W	149	GP 32, 0.75 - 4.5 Nm	392	32	•	•	•	•	•
RE 35, 90 W	149	GP 32, 0.75 - 6.0 Nm	394-399	32	•	•	•	•	•
RE 35, 90 W	149	GP 32, 4.0 - 8.0 Nm	400	32	•	•	•	•	•
RE 35, 90 W	149	GP 42, 3 - 15 Nm	405	32	•	•	•	•	•
RE 35, 90 W	149	GP 32 S	426-433	32	•	•	•	•	•
RE 40, 25 W	150			32	82.4	82.4	82.4	82.4	82.4
RE 40, 150 W	151			32	82.4	82.4	82.4	82.4	82.4
RE 40, 150 W	151	GP 42, 3 - 15 Nm	405	32	•	•	•	•	•
RE 40, 150 W	151	GP 52, 4 - 30 Nm	410	32	•	•	•	•	•
A-max 32	176			32	72.7	72.7	72.7	72.7	72.7
A-max 32	176	GP 32, 0.75 - 6.0 Nm	394-398	32	•	•	•	•	•
A-max 32	176	GS 38, 0.1 - 0.6 Nm	404	32	•	•	•	•	•
A-max 32	176	GP 32 S	426-433	32	•	•	•	•	•
EC-max 40, 70 W	252			31.8	73.7	73.7	73.7	73.7	73.7
EC-max 40, 70 W	252	GP 42, 3 - 15 Nm	406	31.8	•	•	•	•	•
EC-max 40, 120 W	253			31.8	103.7	103.7	103.7	103.7	103.7
EC-max 40, 120 W	253	GP 42, 3.0 - 15.0 Nm	406	31.8	•	•	•	•	•
EC-max 40, 120 W	253	GP 52, 4 - 30 Nm	411	31.8	•	•	•	•	•

Technical Data	
Supply voltage V_{CC}	5 V ± 5%
Typical current draw	14 mA
Output signal	TTL compatible
Phase shift ϕ	90°e ± 45°e
Index pulse width	90°e ± 45°e
Operating temperature range	-25...+85 °C
Moment of inertia of code wheel	≤ 1.7 gcm ²
Output current per channel	max. 5 mA



The index signal I is synchronized with channel A or B.

Opt. terminal resistance $R > 1 \text{ k}\Omega$