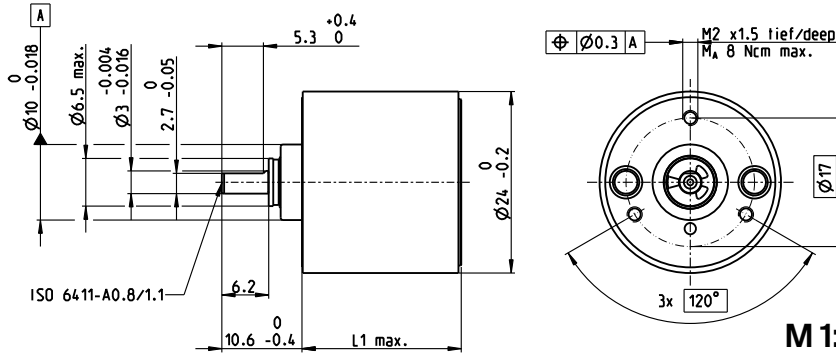


Spur Gearhead GS 24 A Ø24 mm, 0.1 Nm



Technical Data

Spur Gearhead	straight teeth
Housing	plastic
Output shaft	stainless steel, hardened
Bearing at output	sleeve bearing
Radial play, 8 mm from flange	max. 0.038 mm
Axial play	0.03–0.30 mm
Max. axial load (dynamic)	8 N
Max. force for press fits	500 N
Max. continuous input speed	4000 rpm
Recommended temperature range	-15...+80°C
Max. radial load, 8 mm from flange	5 N

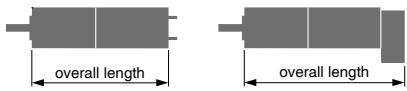
gear

- Stock program
- Standard program
- Special program (on request)

Part Numbers

Gearhead Data	Part Numbers							
	110480	110481	110482	110483	110484	110485	110486	
1 Reduction	7.2:1	20:1	32:1	64:1	131:1	199:1	325:1	
2 Absolute reduction	$\frac{93}{13}$	$\frac{753424}{38025}$	$\frac{923521}{28561}$	$\frac{837}{13}$	$\frac{212629}{1625}$	$\frac{887503681}{4455516}$	$\frac{14070001}{43264}$	
3 Max. motor shaft diameter	mm 2	2	2	2	2	2	2	
4 Number of stages	2	4	4	4	4	6	6	
5 Max. continuous torque	Nm 0.1	0.1	0.1	0.1	0.1	0.1	0.1	
6 Max. intermittent torque at gear output	Nm 0.15	0.15	0.15	0.15	0.15	0.15	0.15	
12 Direction of rotation, drive to output	=	=	=	=	=	=	=	
7 Max. efficiency	% 81	66	66	66	66	53	53	
8 Weight	g 25	28	28	28	28	30	30	
9 Average backlash no load	° 1.0	2.0	2.0	2.0	2.0	3.0	3.0	
10 Mass inertia	gcm ² 0.008	0.01	0.008	0.007	0.006	0.008	0.006	
11 Gearhead length L1*	mm 16.5	20.2	20.2	20.2	20.2	24	24	

*L1 for A-max 22 L1 is -2.8 mm



maxon Modular System

+ Motor	Page	+ Sensor/Brake	Page	Overall length [mm] = Motor length + gearhead length + (sensor/brake) + assembly parts						
A-max 19	163/164			45.5	49.2	49.2	49.2	49.2	53.0	53.0
A-max 19, 1.5 W	164	MR	475/476	50.6	54.3	54.3	54.3	54.3	58.1	58.1
A-max 19, 1.5 W	164	Enc 22	483	59.9	63.6	63.6	63.6	63.6	67.4	67.4
A-max 19, 2.5 W	165/166			48.1	51.8	51.8	51.8	51.8	55.6	55.6
A-max 19, 2.5 W	166	MR	475/476	52.4	56.1	56.1	56.1	56.1	59.9	59.9
A-max 19, 2.5 W	166	Enc 22	483	62.5	66.2	66.2	66.2	66.2	70.0	70.0
A-max 22	167-170			45.7	49.4	49.4	49.4	49.4	53.2	53.2
A-max 22	168/170	MR	475/476	50.7	54.4	54.4	54.4	54.4	58.2	58.2
A-max 22	168/170	Enc 22	483	60.1	63.8	63.8	63.8	63.8	67.6	67.6