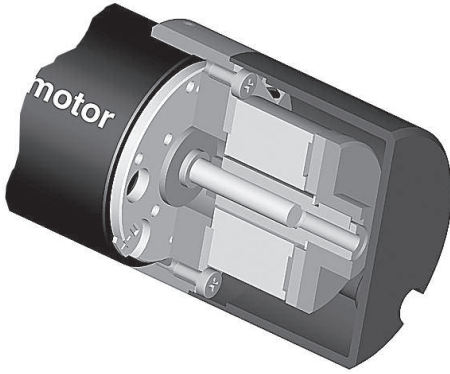


Brake AB 28 24 VDC, 0.4 Nm

accessories



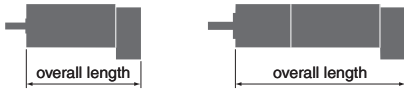
Important Information

- Permanent magnet – single-face brake for DC (dry operation). Braking in unpowered condition.
- Holding brake, prevents rotation of the shaft at standstill or with turned off motor power.
- Not suitable for dynamic braking.
- It is possible to lower the voltage applied to the brake after it has been energized, for the purpose of reducing heat loss.
- Schematic image: does not necessarily reflect the delivery state.

- Stock program
- Standard program
- Special program (on request)

Part Numbers	
301215	

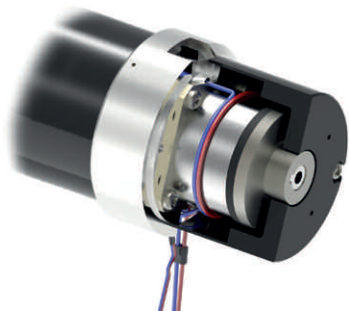
Type



maxon Modular System							
+ Motor	Page	+ Gearhead	Page	+ Sensor	Page	∅ AB [mm]	Overall length [mm] / • see Gearhead
EC-max 40, 70 W	242					40	92.4
EC-max 40, 70 W	242	GP 42, 3 - 15 Nm	397			40	•
EC-max 40, 70 W	242			HEDL 5540	474	40	110.7
EC-max 40, 70 W	242	GP 42, 3 - 15 Nm	397	HEDL 5540	474	40	•
EC-max 40, 120 W	243					40	122.4
EC-max 40, 120 W	243	GP 52, 4 - 30 Nm	402			40	•
EC-max 40, 120 W	243			HEDL 5540	474	40	140.7
EC-max 40, 120 W	243	GP 52, 4 - 30 Nm	402	HEDL 5540	474	40	•

Technical Data				Pin Allocation	
Max. permissible static torque at 20°C	0.4 Nm	Nominal voltage, smoothed	24 VDC ±10%	Cable (AWG 26)	Designation
Mass inertia	10 gcm ²	Resistance	R ₂₀ = 92.5 Ω ±6%	red	U _{Brake} + 24 VDC
Max. speed	16 000 rpm	Duty cycle	100%	blue	U _{Brake} GND
Weight	0.05 kg	Reaction time	- Coupling ≤ 13 ms	Min. cable length	350 mm
Ambient temperature range	-5...+85°C		- Opening ≤ 27 ms		

Brake AB 28 24 VDC, 0.4 Nm



Important Information

- Permanent magnet – single-face brake for DC (dry operation). Braking in unpowered condition.
- Holding brake, prevents rotation of the shaft at standstill or with turned off motor power.
- Not suitable for dynamic braking.
- It is possible to lower the voltage applied to the brake after it has been energized, for the purpose of reducing heat loss.
- Schematic image: does not necessarily reflect the delivery state.

accessories

- Stock program
- Standard program
- Special program (on request)

Part Numbers

228384 228387

Type



maxon Modular System

+ Motor	Page	+ Gearhead	Page	+ Sensor	Page	∅ AB [mm]	Overall length [mm] / • see Gearhead
RE 25, 20 W	135					40	77.1
RE 25, 20 W	135	GP 22, 0.5 - 1.0 Nm	375			40	•
RE 25, 20 W	135	GP 26, 0.75 - 4.5 Nm	381			40	•
RE 25, 20 W	135	GP 32, 0.75 - 4.5 Nm	383			40	•
RE 25, 20 W	135	GP 32, 0.75 - 4.5 Nm	384			40	•
RE 25, 20 W	135	GP 32, 1.0 - 6.0 Nm	387/394			40	•
RE 25, 20 W	135	GP 32 S	416-420			40	•
RE 25, 20 W	135			HED_ 5540	472/473	40	94.3
RE 25, 20 W	135	GP 22, 0.5 - 1.0 Nm	375	HED_ 5540	472/473	40	•
RE 25, 20 W	135	GP 26, 0.75 - 4.5 Nm	381	HED_ 5540	472/473	40	•
RE 25, 20 W	135	GP 32, 0.75 - 4.5 Nm	383	HED_ 5540	472/473	40	•
RE 25, 20 W	135	GP 32, 0.75 - 4.5 Nm	384	HED_ 5540	472/473	40	•
RE 25, 20 W	135	GP 32, 1.0 - 6.0 Nm	387/394	HED_ 5540	472/473	40	•
RE 25, 20 W	135	GP 32 S	416-420	HED_ 5540	472/473	40	•
RE 25, 20 W	136					40	88.6
RE 25, 20 W	136	GP 26, 0.75 - 4.5 Nm	381			40	•
RE 25, 20 W	136	GP 32, 0.75 - 4.5 Nm	383			40	•
RE 25, 20 W	136	GP 32, 0.75 - 4.5 Nm	384			40	•
RE 25, 20 W	136	GP 32, 1.0 - 6.0 Nm	387/394			40	•
RE 25, 20 W	136	GP 32 S	416-420			40	•
RE 25, 20 W	136			HED_ 5540	471/473	40	105.8
RE 25, 20 W	136	GP 26, 0.75 - 4.5 Nm	381	HED_ 5540	471/473	40	•
RE 25, 20 W	136	GP 32, 0.4 - 2.0 Nm	383	HED_ 5540	471/473	40	•
RE 25, 20 W	136	GP 32, 0.75 - 4.5 Nm	384	HED_ 5540	471/473	40	•
RE 25, 20 W	136	GP 32, 1.0 - 6.0 Nm	387/394	HED_ 5540	471/473	40	•
RE 25, 20 W	136	GP 32 S	416-420	HED_ 5540	471/473	40	•
RE 35, 90 W	139					40	107.1
RE 35, 90 W	139	GP 32, 0.75 - 6.0 Nm	383-390			40	•
RE 35, 90 W	139	GP 32, 4.0 - 8.0 Nm	391			40	•
RE 35, 90 W	139	GP 42, 3 - 15 Nm	396			40	•
RE 35, 90 W	139			HED_ 5540	471/473	40	124.3
RE 35, 90 W	139	GP 32, 0.75 - 6.0 Nm	383-390	HED_ 5540	471/473	40	•
RE 35, 90 W	139	GP 32, 4.0 - 8.0 Nm	391	HED_ 5540	471/473	40	•
RE 35, 90 W	139	GP 42, 3 - 15 Nm	396	HED_ 5540	471/473	40	•
RE 35, 90 W	139	GP 32 S	416-420			40	•
RE 35, 90 W	139	GP 32 S	416-420	HED_ 5540	471/473	40	•
RE 40, 150 W	141					45	107.1
RE 40, 150 W	141	GP 42, 3 - 15 Nm	396			45	•
RE 40, 150 W	141	GP 52, 4 - 30 Nm	401			45	•
RE 40, 150 W	141			HED_ 5540	471/473	45	124.3
RE 40, 150 W	141	GP 42, 3 - 15 Nm	396	HED_ 5540	471/473	45	•
RE 40, 150 W	141	GP 52, 4 - 30 Nm	401	HED_ 5540	471/473	45	•

Technical Data

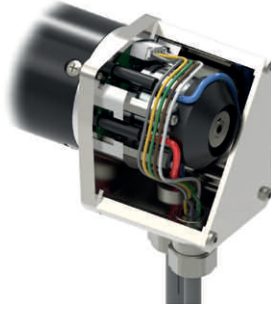
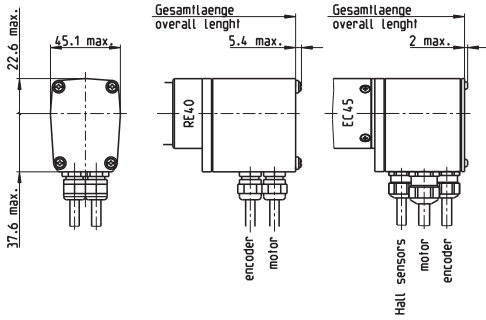
Max. permissible static torque at 20°C	0.4 Nm	Nominal voltage, smoothed	24 VDC ±10%
Mass inertia	10 gcm ²	Resistance	R ₂₀ = 92.5 Ω ±6%
Max. speed	16 000 rpm	Duty cycle	100%
Weight	0.05 kg	Reaction time	≤ 13 ms
Ambient temperature range	-5...+85°C	- Coupling	≤ 27 ms
		- Opening	

Pin Allocation

Cable (AWG 26)	Designation
red	U _{Brake} + 24 VDC
blue	U _{Brake} GND
red	Motor+
black	Motor-
Min. cable length	350 mm

Brake AB 28 24 VDC, 0.4 Nm

accessories



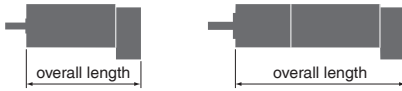
Important Information

- Permanent magnet – single-face brake for DC (dry operation). Braking in unpowered condition.
- Holding brake, prevents rotation of the shaft at standstill or with turned off motor power.
- Not suitable for dynamic braking.
- It is possible to lower the voltage applied to the brake after it has been energized, for the purpose of reducing heat loss.
- Schematic image: does not necessarily reflect the delivery state.

- Stock program
- Standard program
- Special program (on request)

Part Numbers	
228389	228390

Type



maxon Modular System						
+ Motor	Page	+ Gearhead	Page	+ Sensor	Page	Overall length [mm] / * see Gearhead
RE 40, 150 W	141					115.1
RE 40, 150 W	141	GP 42, 3 - 15 Nm	396			•
RE 40, 150 W	141	GP 52, 4 - 30 Nm	401			•
RE 40, 150 W	141			HEDL 9140	478	135.6
RE 40, 150 W	141	GP 42, 3 - 15 Nm	396	HEDL 9140	478	•
RE 40, 150 W	141	GP 52, 4 - 30 Nm	401	HEDL 9140	478	•
EC 45, 150 W	230					118.6
EC 45, 150 W	230	GP 42, 3 - 15 Nm	396			•
EC 45, 150 W	230	GP 52, 4 - 30 Nm	401			•
EC 45, 150 W	230			HEDL 9140	478	135.6
EC 45, 150 W	230	GP 42, 3 - 15 Nm	396	HEDL 9140	478	•
EC 45, 150 W	230	GP 52, 4 - 30 Nm	401	HEDL 9140	478	•
EC 45, 250 W	231					151.4
EC 45, 250 W	231	GP 42, 3 - 15 Nm	397			•
EC 45, 250 W	231	GP 52, 4 - 30 Nm	401			•
EC 45, 250 W	231	GP 62, 8 - 50 Nm	403			•
EC 45, 250 W	231			HEDL 9140	478	168.4
EC 45, 250 W	231	GP 42, 3 - 15 Nm	397	HEDL 9140	478	•
EC 45, 250 W	231	GP 52, 4 - 30 Nm	401	HEDL 9140	478	•
EC 45, 250 W	231	GP 62, 8 - 50 Nm	403	HEDL 9140	478	•

Technical Data				Pin Allocation	
Max. permissible static torque at 20°C	0.4 Nm	Nominal voltage, smoothed	24 VDC ±10%	Cable green	from motor clamp RE 40 (AWG 20) $U_{\text{Brake}} + 24 \text{ VDC}$
Mass inertia	10 gcm ²	Resistance	$R_{20} = 92.5 \Omega \pm 6\%$	Cable yellow	(AWG 20) EC 45 $U_{\text{Brake}} \text{ GND}$
Max. speed	16 000 rpm	Duty cycle	100%	Cable No 4	(AWG 18) $U_{\text{Brake}} + 24 \text{ VDC}$
Weight	0.05 kg	Reaction time	– Coupling ≤ 13 ms	Cable No 5	(AWG 18) $U_{\text{Brake}} \text{ GND}$
Ambient temperature range	-5...+85°C		– Opening ≤ 27 ms	Min. cable length	500 mm