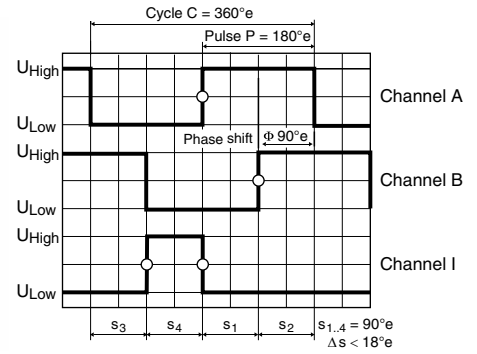
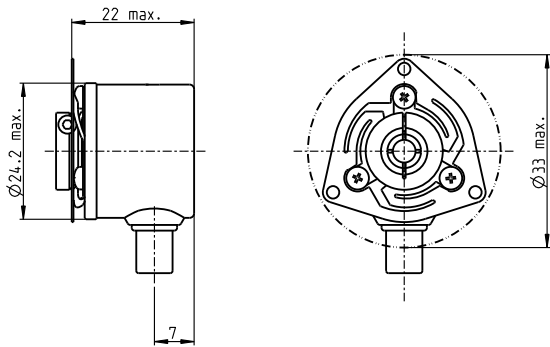


Encoder 2RMHF 3000–5000 CPT, 3 Channels, with Line Driver RS 422

maxon sensor



Direction of rotation cw (definition cw p. 60)

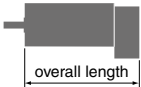
- Stock program
- Standard program
- Special program (on request)

Part Numbers

	461214	461216	461213	461215	X drives
Counts per turn	3000	3000	5000	5000	3000–5000
Number of channels	3	3	3	3	3
Max. operating frequency (kHz)	200	200	200	200	200
Max. speed (rpm)	4000	4000	2400	2400	4000–2400
Shaft diameter (mm)	4	6	4	6	4

Type (provisional)

Type (provisional)	461214	461216	461213	461215	X drives
Counts per turn	3000	3000	5000	5000	3000–5000
Number of channels	3	3	3	3	3
Max. operating frequency (kHz)	200	200	200	200	200
Max. speed (rpm)	4000	4000	2400	2400	4000–2400
Shaft diameter (mm)	4	6	4	6	4



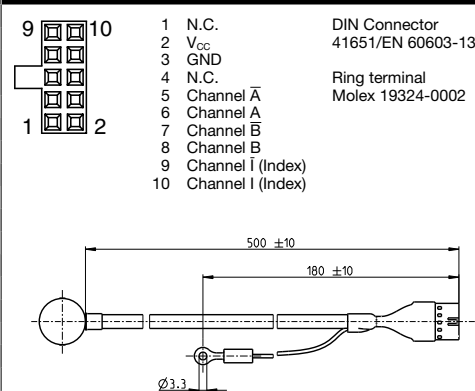
maxon Modular System

+ Motor	Page	+ Gearhead	Page	+ Brake	Page	Overall length [mm] / ● see Gearhead	
DCX 32 L	86						online
DCX 35 L	87						online
EC-4pole 30, 100 W 233						75.2	75.2
EC-4pole 30, 200 W 235						92.2	92.2
EC-i 40, 50 W	246/247						56.2
EC-i 40, 70 W	248/249						66.2
EC-i 40, 100 W	250						86.2

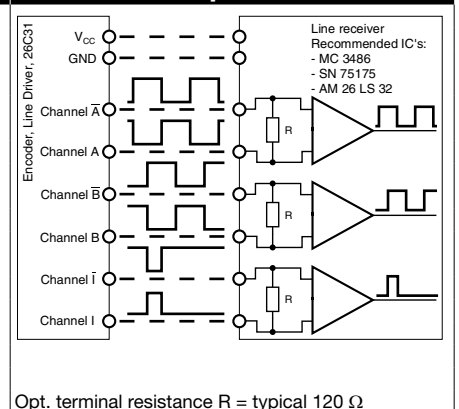
Technical Data

Supply voltage V_{CC}	4.5 - 5.5 V
Typical current draw	30 mA
Output signal driver used:	EIA Standard RS 422 26C31
Operating temperature range	-40...+85 °C
Moment of inertia of code wheel	1.0 gcm ²
Output current per channel	± 30 mA
Phase shift ϕ	90°e ± 18°e
Index pulse width	90°e ± 18°e
Max. startup torque at 25 °C	< 5 mNm

Pin Allocation



Connection example



The index signal I is synchronized with channel A or B.