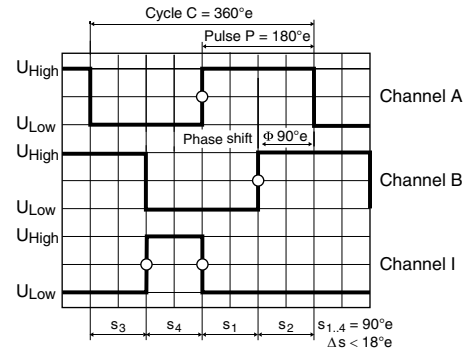
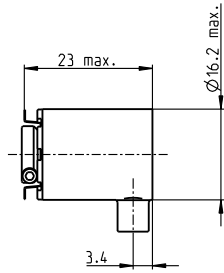


# Encoder SCH16F 2000–3600 CPT, 3 Channels, with Line Driver RS 422



Direction of rotation cw (definition cw p. 60)

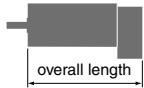
- Stock program
- Standard program
- Special program (on request)

### Part Numbers

461212	461211	X drives
--------	--------	----------

### Type (provisional)

Counts per turn	2000	3600	2000–3600
Number of channels	3	3	3
Max. operating frequency (kHz)	200	200	200
Max. speed (rpm)	6000	3333	6000–3333
Shaft diameter (mm)	3	3	2



### maxon Modular System

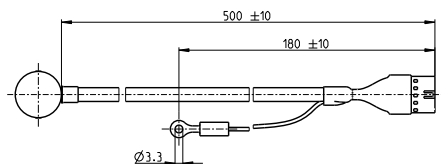
+ Motor	Page	+ Gearhead	Page	+ Brake	Page	Overall length [mm] / ● see Gearhead
DCX 22 S	80-81					online
DCX 22 L	82-83					online
EC-4pole 22, 90 W	237					76.1 / 76.1
EC-4pole 22, 120 W	238					93.5 / 93.5

### Technical Data

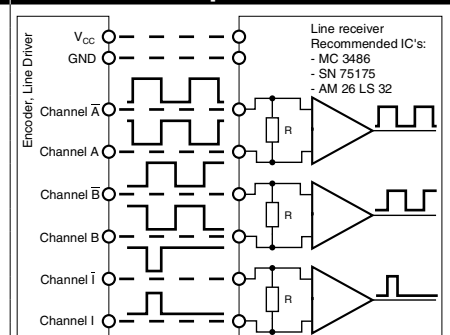
Supply voltage $V_{CC}$	4.5 - 30 V
Typical current draw	30 mA
Output signal	EIA Standard RS 422
Operating temperature range	-20...+70 °C
Moment of inertia of code wheel	0.25 gcm <sup>2</sup>
Output current per channel	± 20 mA
Phase shift $\phi$	90°e ± 18°e
Index pulse width	90°e ± 18°e
Max. startup torque at 25 °C	< 5 mNm

### Pin Allocation

9	10	1	N.C.	41651/EN 60603-13
		2	$V_{CC}$	
		3	GND	Ring terminal
		4	N.C.	Molex 19324-0002
		5	Channel A	
		6	Channel A	
		7	Channel B	
		8	Channel B	
		9	Channel I (Index)	
		10	Channel I (Index)	
			DIN Connector	



### Connection example



Opt. terminal resistance R = typical 120 Ω

The index signal I is synchronized with channel A or B.